

# **Remote Deposit Capture Scanner Installation Guide for Windows**

**NOTE:** Remote Deposit Capture is supported in **Internet Explorer 11.0+**. The usage of other browsers (such as older versions of Internet Explorer) may prevent successful installation and usage of the service. Google Chrome, Mozilla Firefox, Microsoft Edge can be supported with the additional installation of RangerRemote.

**For this removal and installation to complete successfully, you must be logged into Windows as an ADMINISTRATOR; if you are not, please contact your IT department for further assistance.**

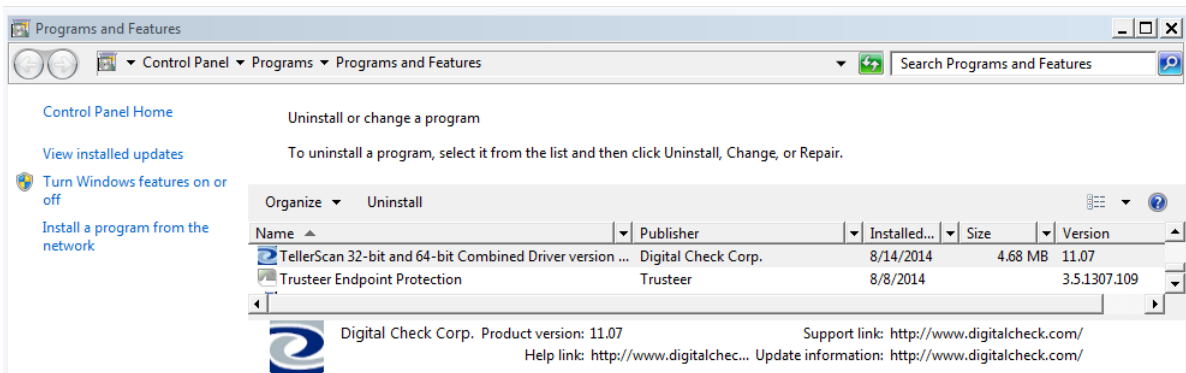
## **Removing the Old Driver Software**

If you have been using Remote Deposit Capture with another financial institution and will no longer be depositing there, you should make sure that there are no old drivers (configuration software) still on your computer. To find and remove the old software:

### **For Windows 7:**

1. Unplug your scanner.
2. Click the “Start” Menu in the lower-left hand corner of your screen.
3. Select “Control Panel”
4. Select “Uninstall a Program” or “Programs and Features”
5. Search for any software that begins with or references:
  - Digital Check
  - TellerScan
  - Panini
  - NCR
  - Epson
  - FIS

Click that software, then select “Uninstall” at the top of the window.



6. Follow the on-screen prompts to completely uninstall the software.

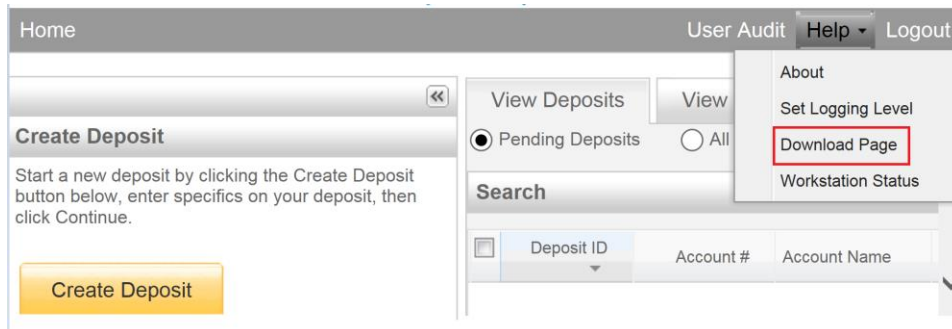
**For Windows 8 and above:**

1. Unplug your scanner.
2. Right-click the start menu in the lower-left hand corner of your desktop.
3. Select “Programs and Features” in the menu that pops up.
4. Search for any software that begins with or references “Digital Check”, “TellerScan”, or “Panini”. Click that software, then select “Uninstall” at the top of the window.
5. Follow the on-screen prompts to completely uninstall the software.

**Accessing and Downloading the Driver**

For your Remote Deposit Capture scanner to function properly, a new driver will need to be installed. To obtain that file:

1. Log into Commercial Center
2. Select the Remote Deposit tile
3. From the Help menu in the upper right hand corner, select Download Page



4. Select your scanner model from the Component list and click “Install Now”

The screenshot shows a web interface titled "Download Page". At the top right, there is a "Rows per page:" dropdown set to "10". Below this is a "Category:" dropdown menu currently set to "Show All". The main content is a table with two columns: "Component" and "Description". Each row in the table has an "Install Now" button to its right. The row for "DigitalCheck TS Series and CX30" is highlighted with a red border. At the bottom of the table, there is a pagination control showing "Displaying 1 - 20 of 20" and "Page 1 of 1". Below the pagination are two buttons: "<< Status Check" and "Select Driver >>".

Component	Description	Install Now
	makes necessary setting changes for Internet Explorer.	Install Now
Canon CR50 and CR80	Installs Image Viewer, Logging, and Specified Scanner Driver. Also makes necessary setting changes for Internet Explorer.	Install Now
CRS LS100	Installs Image Viewer, Logging, and Specified Scanner Driver. Also makes necessary setting changes for Internet Explorer.	Install Now
CTS LS150	Installs Image Viewer, Logging, and Specified Scanner Driver. Also makes necessary setting changes for Internet Explorer.	Install Now
DigitalCheck TS Series and CX30	Installs Image Viewer, Logging, and Specified Scanner Driver. Also makes necessary setting changes for Internet Explorer.	Install Now
Epson CaptureOne	Installs Image Viewer, Logging, and Specified Scanner Driver. Also makes necessary setting changes for Internet Explorer.	Install Now
Epson TMS2000	Installs Image Viewer, Logging, and Specified Scanner Driver. Also makes necessary setting changes for Internet Explorer.	Install Now
MagTek Excella	Installs Image Viewer, Logging, and Specified Scanner Driver. Also makes necessary setting changes for Internet Explorer.	Install Now
Panini	Installs Image Viewer, Logging, and Specified Scanner Driver. Also makes necessary setting changes for Internet Explorer.	Install Now

5. Once downloaded, if you see a confirmation at the bottom of your window, click “Run”; alternatively, “Save” the files to a specific location and open it from there.

The image shows two Windows security warning dialog boxes. The top dialog asks: "Do you want to run or save Fiserv\_SHIP\_RangerForDigitalCheckTSSeries\_CX30\_v4.4.0.1-1.4.3.0.exe (25.1 MB) from sso.fiservsco.com?". It includes a warning icon and the text "This type of file could harm your computer." with buttons for "Run", "Save", and "Cancel". The bottom dialog asks: "The publisher of Fiserv\_SHIP\_RangerForDigitalCheckTSSeries\_CX30\_v4.4.0.1-1.4.3.0.exe couldn't be verified. Are you sure you want to run the program?". It includes a warning icon, a "Learn more" link, and buttons for "Run" and "View downloads".

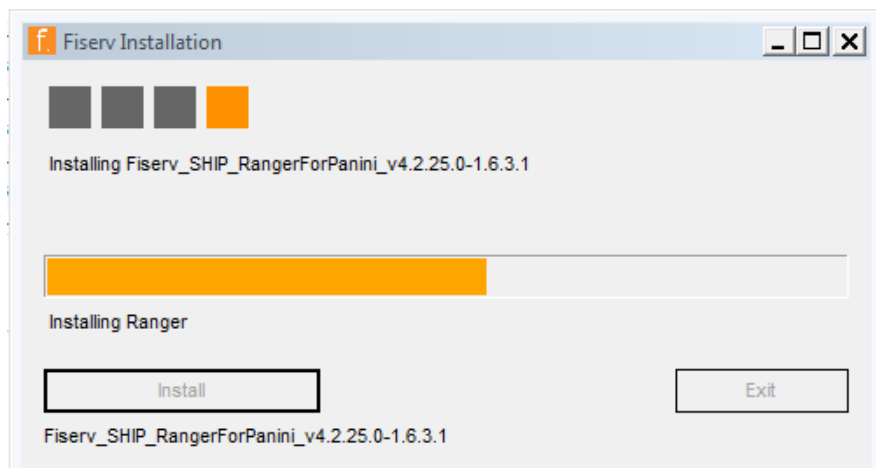
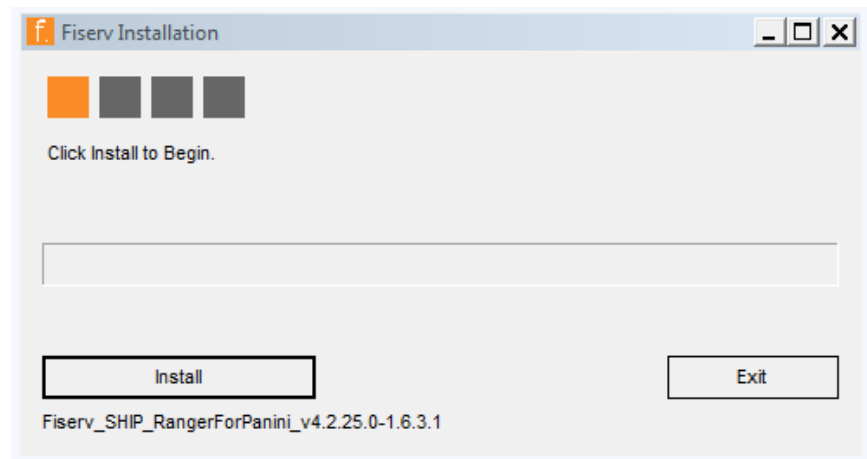
## Installing the Drivers

**REMINDER: For this install to complete successfully, you must be logged into Windows as an ADMINISTRATOR; if you are not, please contact your IT department for further assistance.**

Once the extraction has completed, open the Fiserv\_Ranger file that appears in the folder. A pop-up will appear confirming that you are an administrator and listing some of the features of the driver package; the primary changes are listed here:

- Ensures that a supported Operating System (Windows 7, 8, or 10) is in use
- Copies pre-configured scanner setting files
- Modifies permissions on Silver Bullet Technology (scanner software) directories
- Disables User Account Control (UAC) for Windows 7, or 8
- Disables USB Root Hub power-save feature
- Makes necessary changes in the registry for Trusted Sites and ActiveX controls for all users

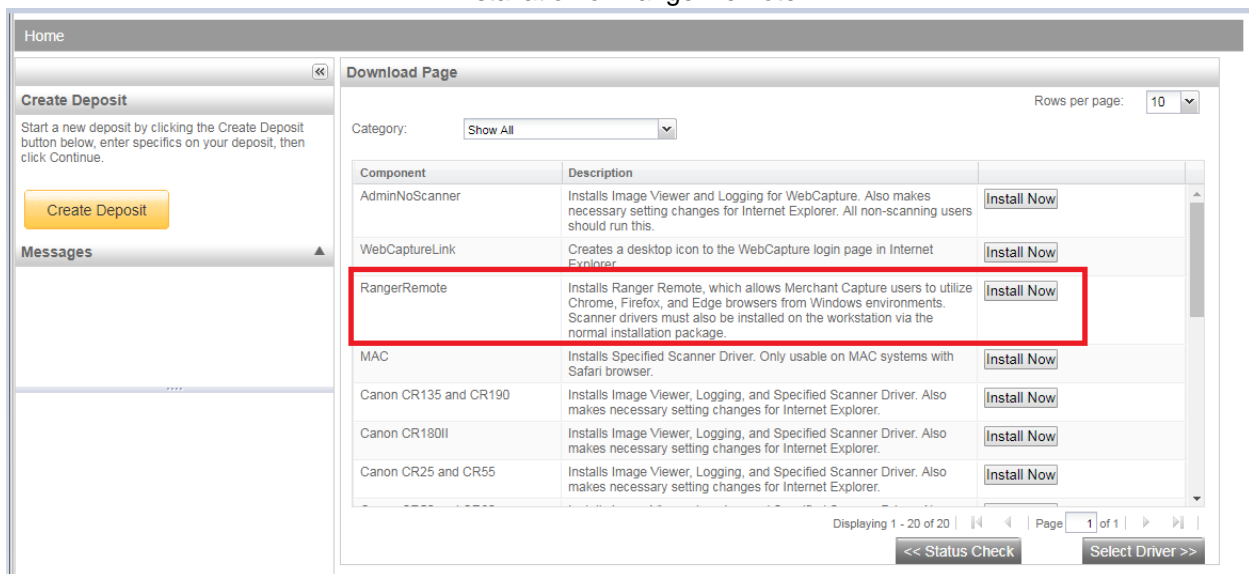
1. To get started with installation, select “Install”



2. Once the installation is complete, select "Exit"



\*Browsers Google Chrome, Mozilla Firefox and Microsoft Edge are supported with the additional installation of RangerRemote.



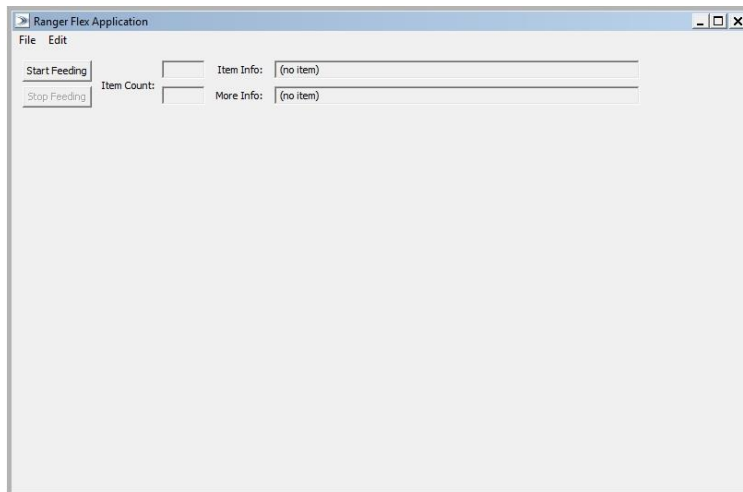
3. When the installation is complete select "Exit", logout of Business Connect and restart your PC.
4. Once you have logged back on, plug in your scanner.

## Testing

Now that your browser settings are complete, we will want to test the scanner to make sure it can correctly image a check by launching the RangerFlex software. Depending on your Operating System, this can be accessed in multiple ways:

- **Windows 7:** Click the Start Menu in the lower-left corner, then navigate to All Programs > Silver Bullet Technology > Ranger > RangerFlex
- **Windows 8:** Click the Start Menu in the lower-left corner, then type “RangerFlex” (without quotes) – a search results screen will appear where you may click the square RangerFlex icon.
- **Windows 10:** Click the Start Menu in the lower-left corner, then navigate to All Apps > Silver Bullet > Ranger > RangerFlex

In RangerFlex, you may click Start Feeding to verify that the scanner is properly imaging a test check. If you can view the front and back images and the MICR line is readable, you may exit the RangerFlex application.



**NOTE:** While you still have Administrator privileges, please log into your Business Connect profile at <http://www.htb.com/>, select “Remote Deposit Capture” under the ACCOUNT SERVICES tab, then create and scan one test deposit. If prompted with an ActiveX control request, please accept and install that control. For further instructions, please see the “Remote Deposit Capture User Guide” on the Treasury Management Resource Center or contact our Customer Care Center at 800.627.1632 during the hours of Monday - Friday from 8am-7pm and Saturday from 9am-3pm.